



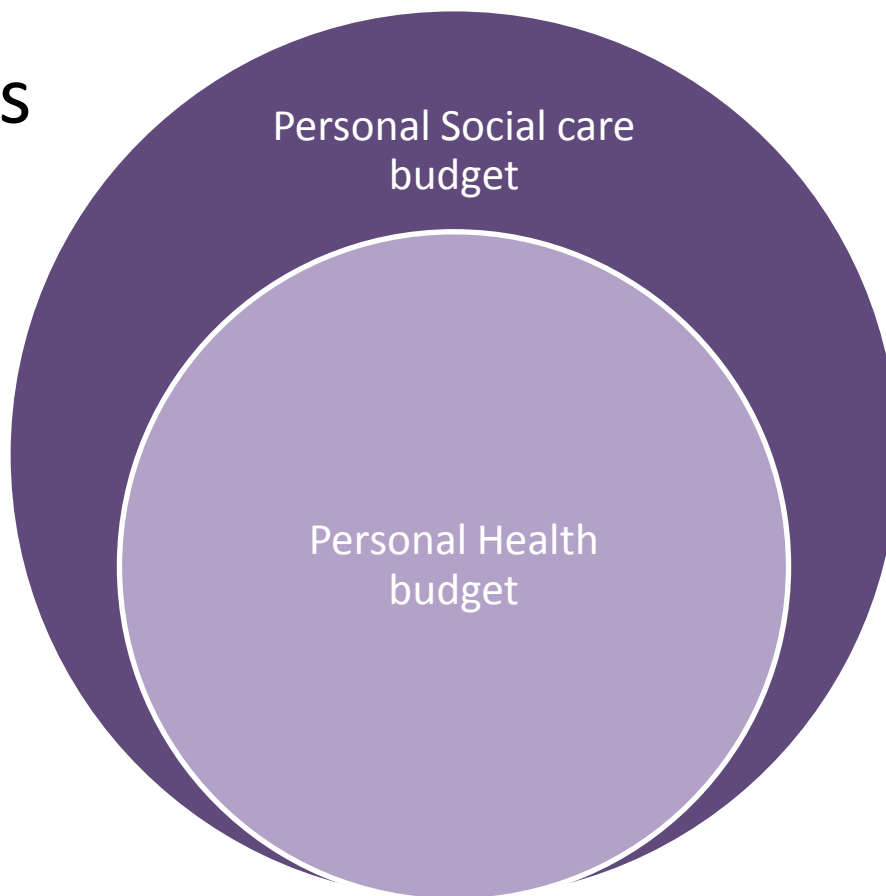
Jane Williamson Project Service Manager





# Who can get a personal budget?

- Two types



# Personal Budgets

## Personal Social Care Budget

- Living in Southwark
- Have a diagnosed mental illness
- Have substantial or critical social care needs
- Living in independent (including supported) accommodation

## Personal Health Budget

- Living in Southwark
- Have a diagnosed mental illness
- Require support or care with health needs
- Would otherwise need or would continue to be in residential or nursing care

# Personal social care budgets

- Making decisions and organising my life
- Managing my actions
- Meeting my personal hygiene needs
- Getting in and out of bed and/or getting dressed
- Preparing meals and /or drinks
- Eating and drinking
- Running my home
- Doing things in the community
- Fulfilling my needs in having work and learning opportunities
- Feeling safe when I am inside my home
- Going outside and needing support in doing it safely

# Personal health budgets

- Attending to my physical health or nursing needs
- Reducing or managing my drug or alcohol use
- Managing my mental health and helping me to stay well
- Managing my medication
- Managing risk to myself or others



# Who has a personal social care budget?

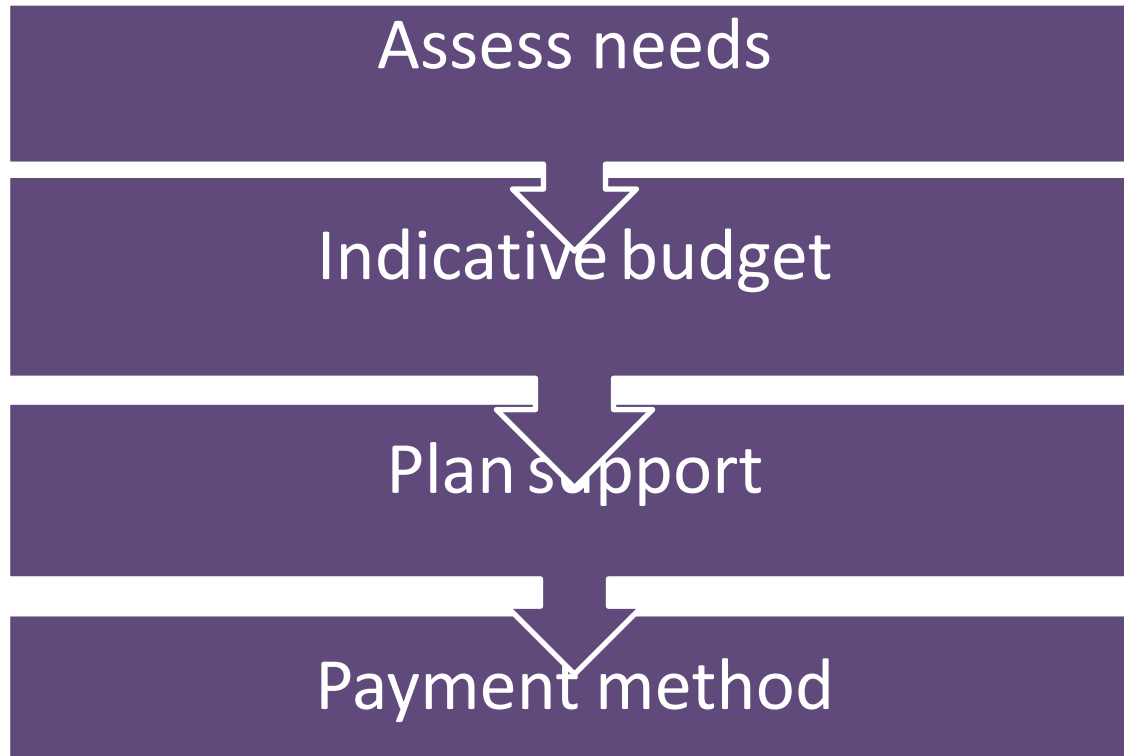
- Approximately 400 people
- **Weekly amounts**
- Highest = £374.40 per week
- Lowest = £5 per week
- **Most common needs**
- 1<sup>st</sup> Community and isolation
- 2<sup>nd</sup> Work and learning



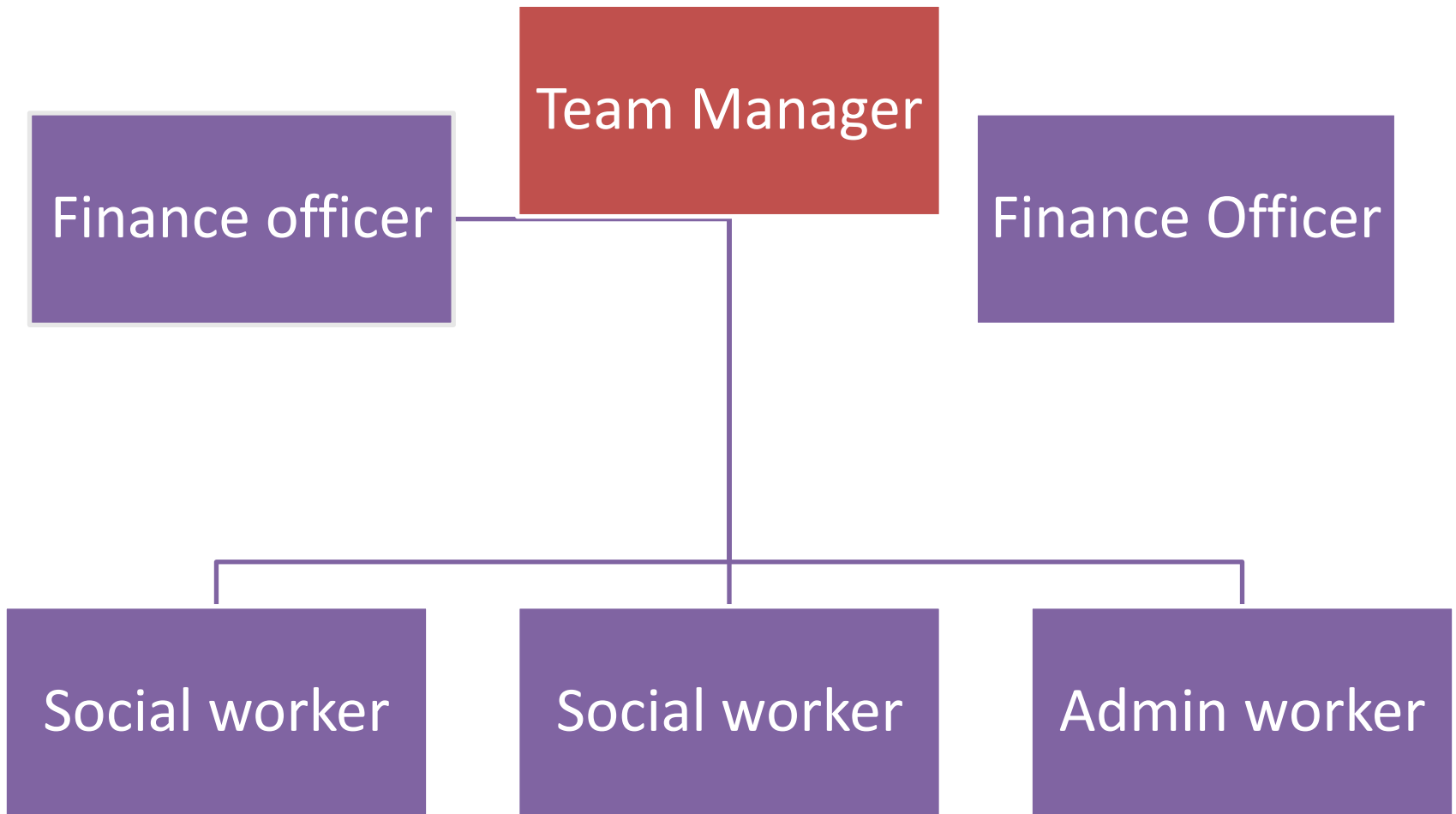
## Who has a personal health budget

- No mental health service users yet
- Continuing Health Care
- Paper exercise to calculate indicative integrated budget for 25 people
- PHB £721 + PSCB-£656= £1378
- PHB £246 + PSCB £140= £386

# Steps to getting a personal budget



# Personalisation team



# Achieving the vision



## 1. Personalised services

- Choice and control for service users
- Up to date OBAs/ Recovery and Support Plans
- Outcome based monitoring

## 2. De-registration

- Change of registration status to supported living
- Personal social care budgets

## 3. Remodelling

- Change current service model to meet local need
- Personal health and social care budgets

# Any Questions?

- [Jane.williamson@slam.nhs.uk](mailto:Jane.williamson@slam.nhs.uk)
- 0207 525 1881/0607